

AVTECH's Power Sensor monitors the on/off state of a power source, such as main power, a UPS, surge protector or standard wall outlet. Simply plug the Power Sensor into the source you wish to monitor. Install multiple Power Sensors to generate alerts when one source fails and the back up takes over.



Power Sensor Package Contents

- One (1) Power Sensor
- One (1) 25' speaker cable
- One (1) 5V power adapter
- Two (2) mounting screws

Power Sensor



Installation Note

Install Your Power Sensor



Do not use this sensor in hazardous (classified) locations or life safety applications.

Step 1: Mount your Power Sensor.

1. Position your Power Sensor close enough to the power source that the power adapter cord will reach. (Don't connect power yet—you'll do that in a later step.)
2. Mount your Power Sensor with screws through the flange holes, secure it with Velcro or simply place it on a flat surface.

Step 2: Connect your Power Sensor to Room Alert.

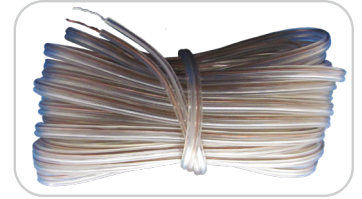


Do not connect the switch sensor inputs (dry contacts) on AVTECH products to any live circuit.

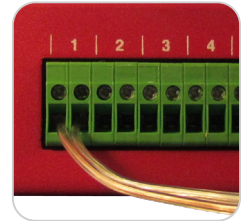
Use only low-voltage 2-wire cable to connect switch sensor inputs.

Power Sensor (RMA-PS1-SEN)

Your Power Sensor comes with one end of the 25' speaker cable already attached to its switch port, which is non-polarized. Follow these steps to attach the other end to a switch port on your Room Alert:



1. Separate and strip the leads on the free end of the speaker cable, exposing about ¼" of wire.
2. Run the speaker cable back to your Room Alert. Try to avoid running it near large electromagnetic devices or fluorescent lights, which produce EMI and can interfere with sensor readings.
3. Connect the free ends (the ¼" leads) of the speaker cable to an open switch port on your Room Alert. Be sure the bare wire, not the insulation, connects to the port. Again, the leads are non-polarized, so you may connect either lead to either side of the open port.



Step 3: Connect your Power Sensor to the power source you wish to monitor.



Use only the AVTECH 5V 1A power adapter. Others may damage the sensor.

1. Connect the included power adapter to the power port on the Power Sensor.
2. Then insert the power adapter plug into the power source you wish to monitor.

Notice that the Status LED lights up when your power source is on.



Sensor Features & Specifications

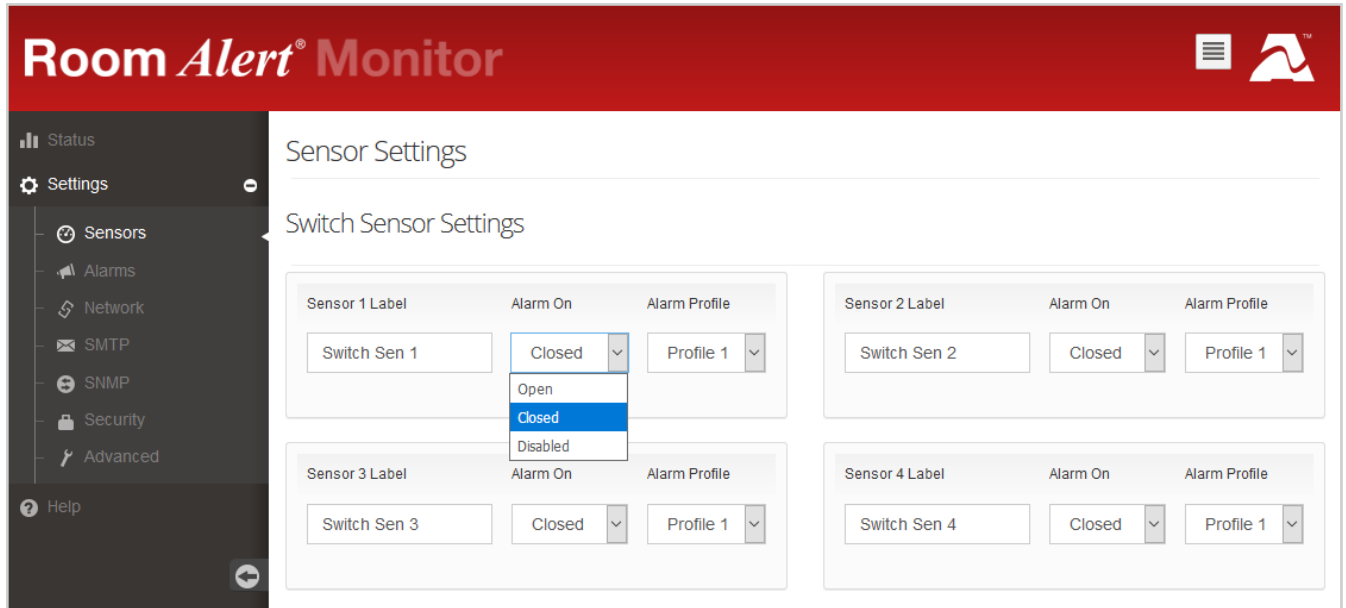
Environment Condition Monitored	Power
Type Of Sensor	Switch
Normal State	Closed (Power ON)
Alarm State	Open (Power OFF)
Power Supply	AVTECH 5V 1A power adapter
Sensor Cable Type	Low-voltage two-wire speaker cable
Included	Yes
Length	25'
Maximum Extendible Length	900'
Operating Temperature	-40° F to 185° F (-40° C to 85° C)
Compatible Products	Any Room Alert model or Wireless Sensor Hub

AVT-171211-2.1.0

Configure Your Switch Sensor

Use Room Alert Monitor's Built-In Web Interface

Navigate to **Settings** → **Sensors** in your Room Alert Monitor's web interface. The options you see below will vary depending on your Room Alert model.



1. Scroll down to *Switch Sensor Settings*.
2. Find the switch sensor label that matches the port you connected your switch sensor to. For example, if you used the first switch sensor port on your Room Alert Monitor, look for *Sensor 1 Label*; if you used the second, look for *Sensor 2 Label*, and so on.
3. In *Sensor X Label*, you may leave the default, "Switch Sen X," or enter something more descriptive. Room Alert "E" models accept up to 15 characters, including only letters, numbers, spaces, hyphens (-), underscores (_) or periods (.). Room Alert "S" models accept up to 30 characters, including the above and special characters, like ampersand (&).
4. In *Alarm On*, select the alarm state (**Open** or **Closed**) for your switch sensor. You may find the alarm state of your switch sensor under the *Features & Specifications* section of this Installation Note.
5. In *Alarm Profile*, which controls light towers and relays on your Room Alert Monitor, you may leave the default, **Profile 1**, or choose another profile from the drop-down menu.
6. Select **Save Settings** at the top or bottom of the page. Your Room Alert Monitor will automatically reboot and commit your changes.