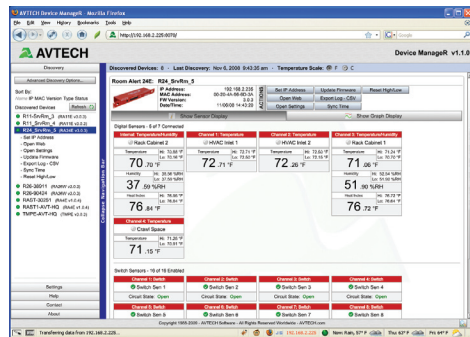
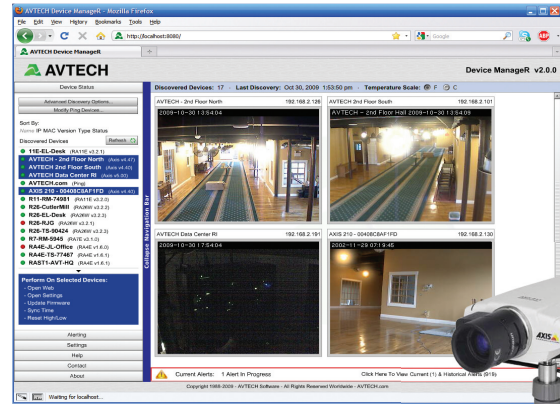


Device Manager™

Multi-Unit Interface For AVTECH Monitors & Axis Cameras... Network-Wide!

Advanced Software For Discovery, Management, Logging, Graphing, Alerting & More

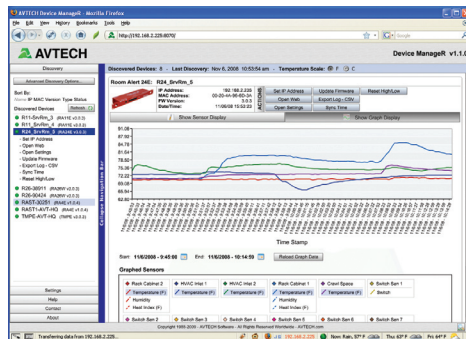
Knowing immediately when an issue or event occurs in your data center or other important facility could save your organization from disaster. **Device Manager™** is an all-in-one solution for the discovery, management, logging, graphing, alerting and more of AVTECH's 'IT & Facilities Environment Monitoring' hardware. Complete with its unique range of features, Device Manager runs as a Windows Service and is ideal for managing single units or a multi-unit deployment via its web interface. Device Manager automatically discovers units across the network and allows users to immediately be informed when environmental thresholds are passed (i.e. temperature too hot, power loss, humidity too high, water leak, etc.). Alerts are sent via email to mobile devices such as computers, mobile phones, *BlackBerrys*, *iPhones*, and *PDA's*.



Being able to view real-time sensor data in a single screen is important to save time and expenses. Device Manager's web browser interface allows users to view and manage any or all units through a single web interface,

accessible from anywhere network-wide. Through a single IP address, users can view, graph and log sensor data in real-time, or over a specified date range, for one or multiple units. Graphs displayed are automatically refreshed allowing users to see exactly what is happening in real-time. All sensor data is stored in an SQL database limited only by disk space. This is an invaluable tool when it comes to comparing data, reporting, or forecasting future needs for planning. Sensor data can be easily exported to CSV, Excel, or for use with an external database.

Device Manager also has the ability to discover any Axis network camera and acts as a single interface for viewing camera images for multiple cameras distributed across the network. Cameras can be set up to sense motion or audio and then alert staff through Device Manager when sensors are triggered. Users can view one camera at a time or call up a summary to view multiple cameras at their facility through a single web page. Users can store images for future reference and forward links to images within alerts. Contact your favorite Reseller or an AVTECH Product Specialist to learn more.



- Web Browser Interface For Remote Monitoring
- Auto Discovery Of AVTECH Monitors & Axis Cameras
- Setup & Configuration Of AVTECH Monitors
- View Sensor Data For Multiple Units Simultaneously
- Log, Graph & Export Historical Sensor Data
- View Multiple Axis Camera Displays Simultaneously
- Send Alerts When Sensor Thresholds Are Passed
- Monitor & Manage Unlimited Units Network-Wide Through A Single IP Address Or Web Page
- Network-Wide Discovery Using UDP Broadcast
- Automatic Discovery Even Across Different Subnets
- Unlimited Data Logging To An Embedded SQL Database With No Limits Other Than Disk Space
- Sensor & Data Graphing On Screen In Seconds... Allows Comparison Of Sensors Side By Side
- Ping Servers And Devices Across Your Network
- Runs As A Windows Service For Security, Allows Multi-User Access Via Network, Using The Web Browser
- Auto Discovery Of Out-Of-Date Firmware
- Upgrade Firmware For One Or Multiple Monitoring Units Simultaneously Across The Network
- Copy Configuration Settings To One Or Multiple Monitoring Units Simultaneously Across The Network
- Graphic Display Of Hardware In Settings Screen
- Supports Schedules, Alerts & Corrective Actions
- Bundled FREE With Room Alert & TemPageR.

FREE Software License

Call AVTECH Today Or Visit Us Online At AVTECH.com To Learn More About This FREE Software...